

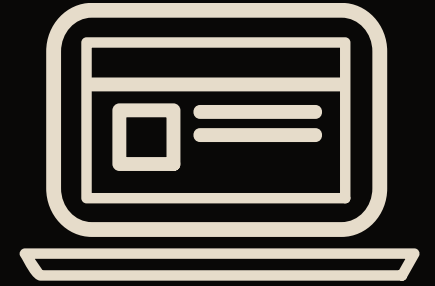
RETURN TO LEARN PLAN 2020-21

CENTER POINT- URBANA

COMMUNITY SCHOOL DISTRICT



CPU ENROLLMENT SURVEY



This presentation will outline the 2020/2021 enrollment options for all CPU students.

At the end of the presentation each family will be asked to fill out an enrollment survey **FOR EACH CHILD IN YOUR FAMILY.**



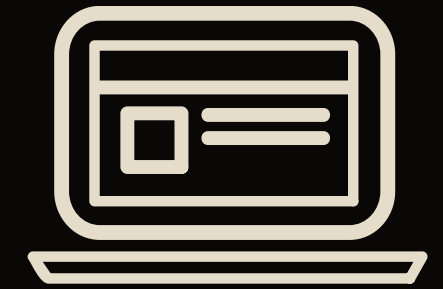
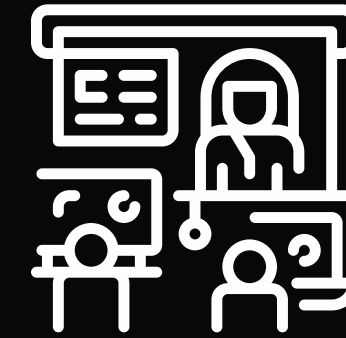
CPU ENROLLMENT SURVEY



CPU ENROLLMENT SURVEY IS DUE AUGUST 5TH
The link to the survey will follow the final slide



LEARNING OPTIONS



Center Point-Urbana Community School District has developed two Fall enrollment options for our PK-12 students:

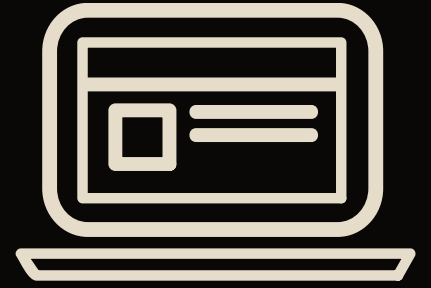
- CPU Face To Face Learning

OR

- CPU Virtual Online Learning

Our CPU families will have the option to choose one of these learning models for the semester/trimester, based on the individual family's health and safety concerns. Please keep in mind, that flexibility will be key this year due to the changing nature of the pandemic.





FALL ENROLLMENT OPTIONS

CPU Face to Face Learning

OR

CPU Virtual Online Learning



CPU FACE TO FACE LEARNING

ENROLLMENT OPTION #1 - CPU FACE TO FACE LEARNING

This model will be similar to a "normal school day schedule," Monday through Friday.

Students will return to school as normal. Daily schedules, classroom structures, and routines will be altered to promote social distancing and mitigation strategies to the extent possible.

Curriculum, instruction, and assessment will be altered to address students' learning gaps and needs due to the extended break from school.



CPU VIRTUAL ONLINE LEARNING

ENROLLMENT OPTION #2 - CPU VIRTUAL ONLINE LEARNING

CPU will offer **CPU Virtual Online Learning** enrollment option for those families with students who have vulnerable health conditions or extreme anxiety about returning to onsite learning. Students in grades K-8 will be provided virtual learning through Edmentum; grades 9-12 will be provided virtual learning through Apex.

Please note, the experience students have when learning in the distance format will be significantly different than what students experience in a face-to-face setting.

- Offered at no cost to families
- If families choose this option, plan for a commitment for the entire first CPU semester/trimester.
- All academic work, including assessments and practice will be required.
- The student will be required to take CPU state assessments at the same frequency as students attending on-site.
- CPU staff will monitor each child's progress toward grade level and content standards.
- Students will receive grades/credit for classes completed in this online format.

If the pandemic continues into the second semester, we will make it easy to continue with online learning for the remainder of the school year.



PREVENTION PRACTICES

CPU FACE TO FACE MITIGATION STRATEGIES

Our priority at Center Point-Urbana is to keep our students and staff safe in a learning environment. We will use the following mitigation strategies and prevention practices to the extent possible.



MITIGATION STRATEGIES

PREVENTION PRACTICES

We will continue to utilize current guidance from the Center for Disease Control (CDC), the Iowa Department of Public Health (IDPH), and County Public Health (CPH).

Recommendations regarding safety protocols will continue to evolve and as a result, the protocols may be subject to change.



PREVENTION PRACTICES

FACE COVERINGS

- Face coverings are strongly recommended to be worn by all people on school property.
- Possible examples of when face coverings are recommended: in the classroom, during passing time, standing in line to pick up lunch, parents coming into school offices, in the stands during activities, riding a school bus and in instances where 6 ft social distancing cannot occur.
- The district will provide face coverings for students and staff, but students and staff may choose to use their own.



PREVENTION PRACTICES

TEMPERATURE SCREENINGS

- Students and staff are expected to conduct a temperature screening each day at home prior to arriving at school.
- Parents are asked to not send their child to school if the child is not feeling well and/or with a temperature of 100.4.
- Students and staff experiencing fevers should be FEVER FREE for 3 days without the assistance of medication before returning to school.



PREVENTION PRACTICES

COUNTY PUBLIC HEALTH DESCRIBES COVID-LIKE SYMPTOMS AS:

- Fever of 100.4 or greater
- Shortness of breath or difficulty breathing
- Cough
- Sore throat
- Chills
- New loss of taste or smell
- Body Aches or muscle pain
- Headache



PREVENTION PRACTICES

WATER BOTTLES

- Students are encouraged to bring their own water bottles to school.
- Water bottle filling stations will be available for student use
- Drinking fountains will not be accessible to students and staff

HANDWASHING

- Signs will be posted to reinforce proper handwashing techniques.
- Classrooms may also take handwashing breaks to allow students increased opportunity to wash hands at school.
- Hand sanitizer will also be made available for individuals entering and exiting classrooms, common areas and/or buildings



PREVENTION PRACTICES

FACILITY CLEANING & DISINFECTING

- Custodians will disinfect all classrooms on a daily basis, utilizing disinfectants on the EPA list of approved products
- Custodians will increase the frequency of daytime cleaning of commonly touched surfaces including handrails, door handles, light switches, etc.
- Custodians will increase the frequency of restroom checks to ensure hand soap and hand sanitizer remain available.
- Buildings and grounds staff will work to maintain adequate inventory of building cleaning supplies and personal protective equipment.
- Regular inspections of ventilation and air handling systems will be conducted to ensure normal operation.



PREVENTION PRACTICES

FIELD TRIPS/ASSEMBLIES

- School wide assemblies will be held virtually or rescheduled to a later date.
- Field trips will be canceled until further notice.
- 6th Grade Camp-Out will be postponed until further notice.
- Volunteers, Educational speakers, Recruiters - college/military/work force, and vendors will be limited and addressed on a case by case basis.



PREVENTION PRACTICES

TRANSPORTATION

- Families who typically utilize busing may volunteer to transport their child(ren) to and from school
- It is strongly recommended that all students wear a face covering on the bus
- All buses will fill back to front, to the extent possible
- Buses will be sanitized between routes with disinfectants on the EPA list of approved products
- Hand sanitizer will be available on each bus.
- Family members will be encouraged to sit together and/or students will be encouraged to sit with those that they have regular contact with
- Students will be encouraged to face forward while riding the bus
- Bus routes will be identified once the number of riders have been determined.



PREVENTION PRACTICES

FOOD SERVICES

- Breakfast and lunch schedules and use of the cafeteria will be adjusted to allow for social distancing to the greatest extent possible.
- Tables will be cleaned between groups of students, with disinfectants on the EPA list of approved products
- Outside parents, guests and visitors will not be permitted during breakfast and lunch.
- Increase the use of individually packaged items in an effort to reduce self-service items and minimize surfaces regularly touched by students.



REPORTING COVID-19 OR COVID TYPE SYMPTOMS

CPU Schools will follow our County Health Department guidelines regarding individuals testing positive

- Any individual testing positive will be quarantined at home for 14 days
- Anyone considered to be exposed (within 6 feet for more than 15 minutes) to an individual testing positive will be quarantined at home for 14 days
- Anyone exhibiting COVID-like symptoms or testing positive for COVID-19 must immediately notify the school nurse or the County Health Department



GENERAL QUESTIONS FAQS

GENERAL QUESTIONS - FAQS

In the following section we have attempted to answer 'general questions'.

If you have specific questions, please contact your child's building administrator or the district office.

Principals' names and email addresses.



CONTACT INFORMATION

CONTACT INFORMATION

Primary: Ann Wooldridge, awooldridge@cpuschools.org 319-849-1102 ext. 9*5100

Intermediate: Jon Hasleiet, jhasleiet@cpuschools.org 319-849-1102 ext. 9*4100

Middle School: KC Tupa, ktupa@cpuschools.org 319-849-1102 ext. 9*3100

High School: Rob Libolt, rlibolt@cpuschools.org 319-849-1102 ext. 9*1100

District Office: 319-849-1102 ext. 9*6013



FREQUENTLY ASKED QUESTIONS

- What learning model will be used when school starts on August 24th? **As of July 29, the district is planning to begin the school year with the Face To Face Learning Model. This decision could change as the Iowa Public Health landscape changes.**
- What if I am not comfortable sending my child to a school building in the fall, due to health and safety concerns? **The CPU Virtual Online Learning enrollment option is available to CPU families at no cost. You will indicate this on a survey following this presentation.**
- What if my child will not do the work of a required online learning program? **It will be essential for parents and staff to work together to ensure student participation and learning progress. In the event, the student is becoming at-risk, the school and parent team will meet to determine the next steps.**



FREQUENTLY ASKED QUESTIONS

- If I choose The CPU Virtual Online Learning enrollment option available to CPU families at no cost, do I need to complete E-REGISTRATION? **Yes, you will still need to complete E-REGISTRATION.**
- If I choose The CPU Virtual Online Learning enrollment option, do I still pay the Student Registration Fee of \$40? **Yes, the fee is required for all CPU students, regardless of your enrollment option.**
- If a student is in need of a district-issued device and/or internet access, what is the process? **Parents/Guardians should contact the building principal(s) to make arrangements.**



FREQUENTLY ASKED QUESTIONS

- Can a family switch enrollment options from "Face to Face" to "CPU Virtual Online Learning?"
 - ***Please contact your child(ren's) building principal and these requests will be evaluated on a case by case basis.***
- Can a family switch enrollment options from "CPU Virtual Online Learning" to "Face to Face?"
 - ***Please contact your child(ren's) building principal and these requests will be evaluated on a case by case basis.***
 - ***9-12 schedules, grades, credit and enrollment in courses may have implications to consider when returning to Face to Face Learning.***



FREQUENTLY ASKED QUESTIONS

- If a student is enrolled in the CPU Virtual Online Learning model, can he or she still participate in extra curricular activities? **Yes, the extra curricular activities would include: sports, band, choir, and school sponsored clubs**
- Can a student on an IEP enroll in CPU Virtual Online Learning?" **Yes, the request can be made. However, the request will not automatically be approved. The decision will be made by the IEP team considering the accommodations/modifications for the student.**
- If a student is enrolled in the CPU Virtual Online Learning model, does he or she participate in school wide assessments? **Yes, students will still need to participate in school wide assessments and weekly progress monitoring (including FAST, ISASP-Iowa Statewide Assessment of Student Progress)**



FREQUENTLY ASKED QUESTIONS

- Will face coverings be required for students and/or staff? **While we agree that face coverings reduce the spread of the virus when social distancing can't be achieved they will not be required for students and staff, yet we are strongly recommending their use, and we will be putting a great deal of time and attention into encouraging and teaching students how to wear them, use them, and why we need to.**
- Which face coverings are appropriate for school? **Face coverings must be school appropriate. If you do not have a face covering, one will be provided.**
 - **(No face coverings that display drug, alcohol and any other face coverings not school appropriate)**



FREQUENTLY ASKED QUESTIONS

- Will temperature checks be taken daily upon entry to school? **No. We encourage families and staff to take temperatures before school. Students and staff with temperatures of 100.4 or higher will be sent home. They will not be able to return to school until they have been Fever Free without the use of medication for 72 hours.**
- Is there a CPU Virtual Online Learning enrollment option for Preschool 3 yr + 4 yr olds? **At this time, there is not a virtual online PK option. CPU is researching options and will have information by August 20th**

FAQS



KEY TERMS

- **CPU Face to Face Learning** is on-site (or bricks and mortar) similar to a "normal school day schedule," Monday through Friday.
- **CPU Virtual Online Learning** is an enrollment option for those families with students who have vulnerable health conditions or extreme anxiety about returning to onsite learning. Students in grades K-8 will be provided virtual learning through Edmentum; grades 9-12 will be provided virtual learning through Apex.

KEY TERMS



KEY TERMS

When we discuss cleaning buildings, three words must be defined:

- **Cleaning** (removing germs)
- **Sanitizing** (reducing germs)
- **Disinfecting** (killing germs)

- **Exposed to COVID-19** means within 6 feet for more than 15 minutes of someone who has tested positive

KEY TERMS



CPU ENROLLMENT SURVEY

CPU ENROLLMENT SURVEY

Please complete the following [CPU Enrollment Survey](#).

Deadline for CPU Enrollment Survey August 5th



EDMENTUM RESOURCES

EDMENTUM RESOURCES

CPU Virtual Online Learning FAQ Document - Parent Information

Edmentum Learning Link ([short video](#))

